

Basic Cabin Rates

Cabin #	Bedrooms	Beds	Guests	Daily Rates	Weekly Rates
1A	1	2-dbl 1-Futon	2	190	1040
1B	1	2-dbl 1-Futon	2	190	1040
2	3	1-Qu/2-dbl/2-tw 2-Futons	7	460	2535
3	3	1-Qu/3-dbl/1-tw 2-hide-a-bed	6	420	2295
4	2	1-Qu/2-tw 1-Futon	4	310	1710
5	2	1-Qu/2-tw 1-Futon	4	290	1580
6	2	1-Qu/2-tw 1-Futon	4	305	1665
7	3	2-Qu/2-tw 2-Futons	6	350	1915
8	2	1-Qu/2-tw 1-Futon	4	300	1640
9	2	1-Qu/2-tw 1-Futon	4	270	1495
10	3	2-Qu/1-dbl/1-tw 1-Futon	6	430	2355
11	3	2-Qu/1-dbl/2-tw 2-Futons	7	470	2595
12	3	2-Qu/1-dbl/2-tw 2-Futons	7	470	2595
13	3	1-Qu/1-dbl/3-tw 2-Futons	6	350	1915
14	3	1-Qu/1-dbl/3-tw 2-Futons	6	345	1910
15	3	2-Qu/4-tw 2-Futons	6	370	2025

Basic Cabin Rates

Cabin #	Bedrooms	Beds	Guests	Daily Rates	Weekly Rates
16A	2	1-Qu/2-dbl 1-Futon	4	260	1430
16B	2	1-Qu/2-dbl 1-Futon	4	225	1225
16C	2	1-Qu/2-dbl 1-hide-a-bed	4	235	1285
16D	3	2-Qu/2-twin 1-Futon	6	300	1640

CABIN AMENITIES INCLUDE

Porches: Cabin 5, 6, 7, 15

Decks: All

Cable TV, Air Conditioning, Soft Water, Wi-Fi - All

Extra Bath: Cabin 2, 3, 10, 11, 12, 14, 15, 16D

Fire Place: Cabin 2, 10, 11, 12, 14, 16A, 16B, 16C

Dishwasher: Cabin 2, 6, 8, 10, 11, 12, 14

ADDITIONAL FEES

Extra person (above number listed on the cabin rates)

Adults 18+ \$25 daily \$135 weekly

Age 10 to 17 \$20 daily \$110 weekly

Under age 10 \$10 daily \$55 weekly

Visitors \$10 daily \$5 under 10

Boats:

18'9" Alumacraft Edge – 140HP Suzuki, Sonar/GPS,

Trolling motor – 2 available (2019, 2021)

\$120 four hrs. \$210 daily \$1050/weekly

18'6" PolarKraft – 70HP Yamaha Sonar/GPS/Trollmotor

\$85 four hrs. \$150 daily \$750 weekly

Pontoons:

SunTracker

\$160 four hrs. \$275 daily \$1375 weekly

Manitou \$120 four hrs. \$210 daily \$1050 weekly

Docking for personal boat

\$22 daily \$110 weekly

Pets each \$27 daily \$135 weekly, must be on leash

BIG ROCK RESORT

WINTER ACTIVITIES

Ice Fishing, Snowmobiling, Skiing,
Deer, Duck and Grouse Hunting.

Enjoy the Leech Lake area in
The COOL seasons.

WINTER RATES

2 Day minimum

Cabin 10: Rate based on 5 persons

Daily \$225.00

Weekly \$1125.00

Extra people: \$25.00/night

Cabin 11 and 12:

Rate based on 5 persons

Daily: \$225.00/night

Weekly: \$1125.00

Extra people: \$25.00/night

Cabin 16A, B, C: Rate based on 2

Daily: \$115.00

Weekly: \$575.00

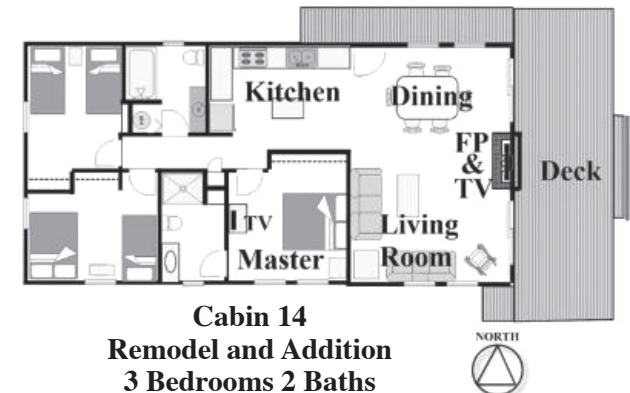
Extra people: \$20.00/night

Cabin 16D: Based on 4 persons

Daily: \$155.00

Weekly: \$775.00

Extra people: \$20.00



Cabin 14
Remodel and Addition
3 Bedrooms 2 Baths

1-800-827-7106

BIG ROCK RESORT

Leech Lake's Finest

2022 RATES

20 DELUXE HOUSEKEEPING CABINS

Comfortable and clean, carpeted, heated and air-conditioned, full-size stoves, fully equipped kitchens, microwaves, coffee-makers, tub-showers, ceiling fans. Cable TV, soft water, Wi-Fi, Weber grills and picnic tables.

You bring kitchen & bath towels and soaps.

New centrally located laundromat.

RECREATION FACILITIES

Heated pool and hot tub, large deck, tennis court, fire pits, basketball, volleyball, pickleball, horseshoe pits, shuffleboard, canoes, kayaks, stand-up paddle boards, children's crafts, fishing contest for children and water-toys.

LODGE

Large stone fireplaces, 1919 on tap root beer, pizza, ice cream cones, grocery items, candy, beverages, fishing tackle, clothing and souvenirs.

Lounge area, big screen TV, library and separate game room:

Pool table, foosball, and air hockey table.

"NEW" HARBOR AND MARINA

50 boat protected inland harbor w/electricity.

Full-service resort marina.

Bait, gas, oil, fishing boats and pontoons.

Helpful dock crew and free fish fillet service.

Excellent fishing guides available.

"DOCK AT THE ROCK"

BIG ROCK RESORT

OPEN ALL YEAR

General Manager: Ray Phillippi

7860 Hawthorn Trail NW

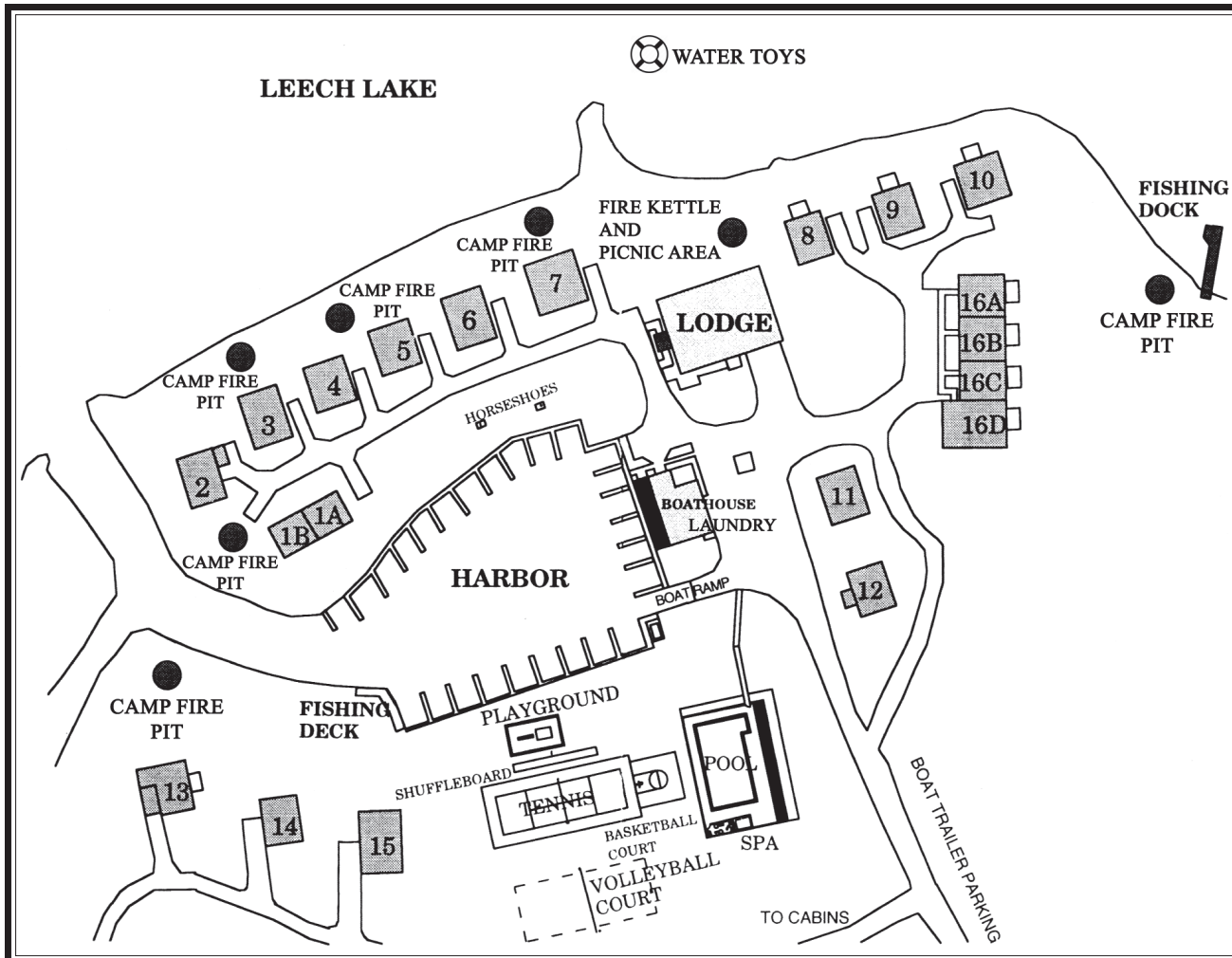
Walker, MN 56484

Business: 218-547-1066

Reservation: 800-827-7106

e-mail: bigrock@arvig.net

Internet: www.bigrockresort.com



CHECK-IN: 4:00 P.M. CHECK-OUT: 9:00 A.M.

All bills must be paid before 9:00 A.M. on check out day. **Please realize that early arrivals on check-in day make it difficult to get our cabins ready.** We ask that you time your arrival accordingly. Cabins may not be available until scheduled check-in time.

SPRING AND FALL SPECIAL

	Fri/Sat	3 Nights	5+ Nights
5/13 - 6/10 Spring	20%	25%	25%
6/11 - 8/19 Summer	0%	0%	0%
8/20 - 10/1 Fall	25%	30%	40%

DEPOSIT OF \$300 PER WEEK REQUIRED

Required deposit must accompany reservations. Reservations made by telephone will be honored without deposit for 7 days. Reservations confirmed by e-mail. Guests responsible for full length of scheduled stay. Deposits are nonrefundable, but may be used for re-scheduled visit within 1 year, with cancellations made 60 days in advance of scheduled check-in day.

Sales Tax of 7.375% Lodging Tax of 3%

3% processing fee on all credit/debit card usage

Like and Follow us on Facebook:
www.facebook.com/BigRockResort
 For weekly fishing reports and blogs